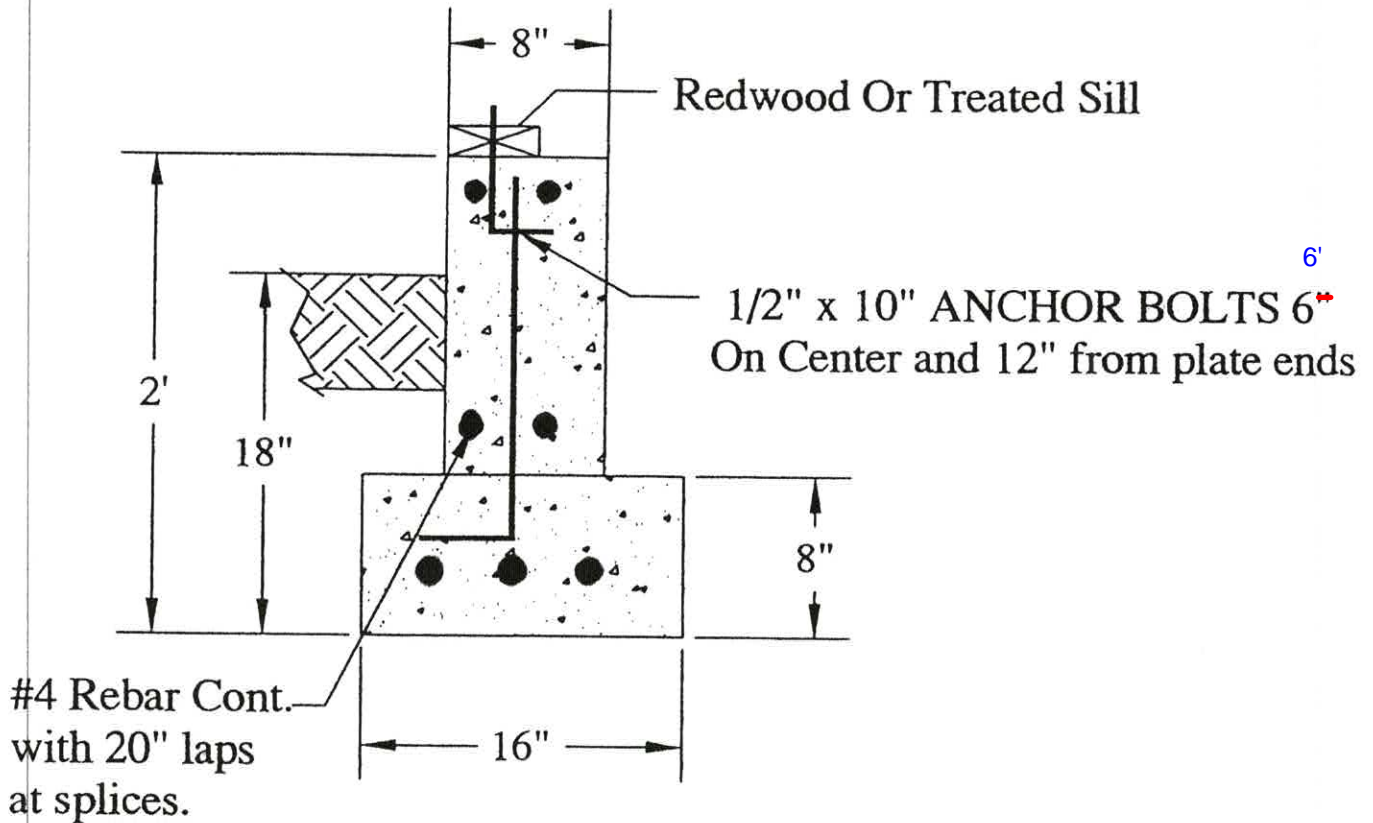


Crawlspace Foundation



NOTES:

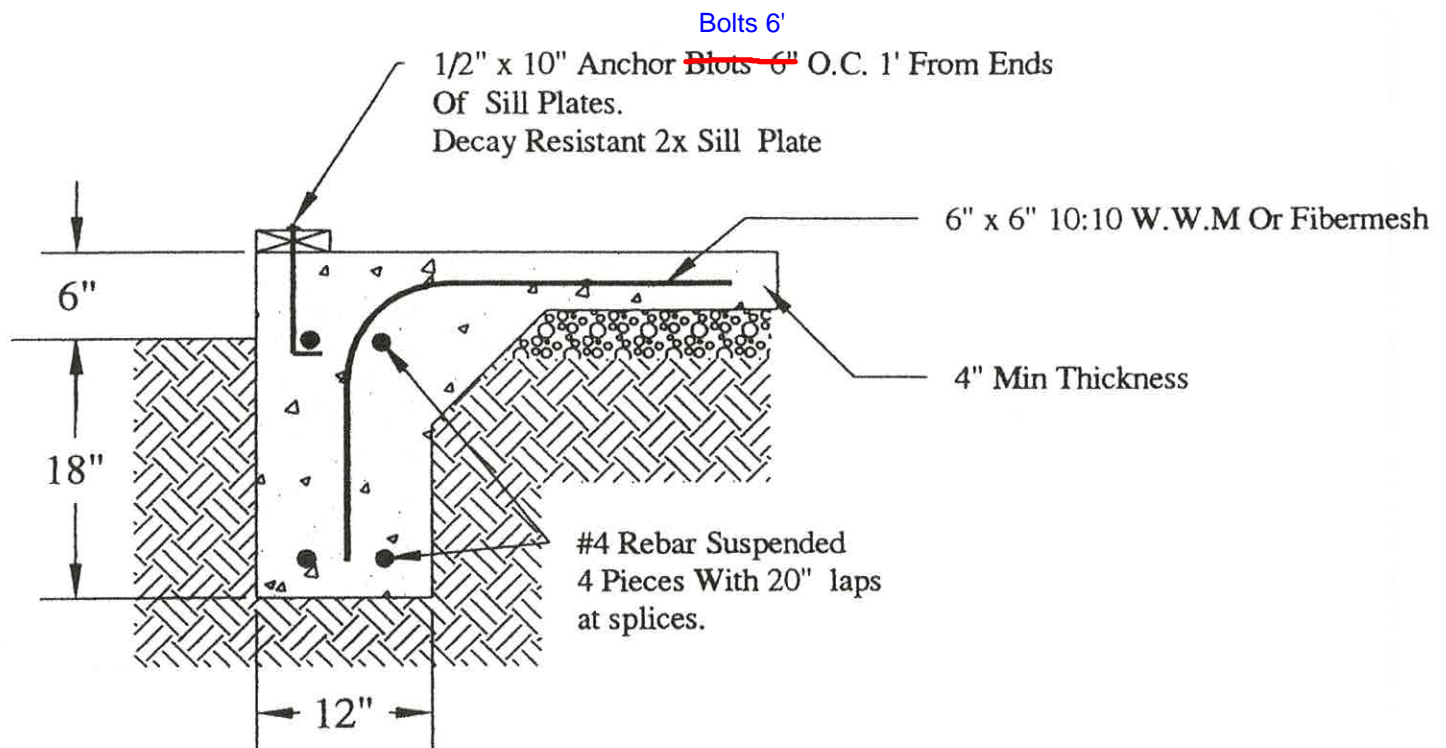
Maintain 3" Clearance Between Bottom Of
Trench And Rebar. Also Maintain 1 1/2"
Clearance Between Inside Of Forms And Rebar.

Carefully Establish Elevation So That Ground
Will Slope Away From Foundation When Graded.
Most Urban Settings Require Finsh Grade To Be
12"+2% Above Flow Line Of Gutter.

Minimum Footer/Stemwall Requirements

City Of Delta

* Or As Approved By The Building Official For
Detached Accessory Use Building Only.



NOTES:

Sill plates to be redwood or approved treated wood.

Maintain minimum of 3" between rebar and earth.

Slope ground away from stemwall
After installation.

**MINIMUM MONOLITHIC REQUIREMENTS
CITY OF DELTA**