

How To Use the Tools for the City of Delta Zoning Map– November 2021

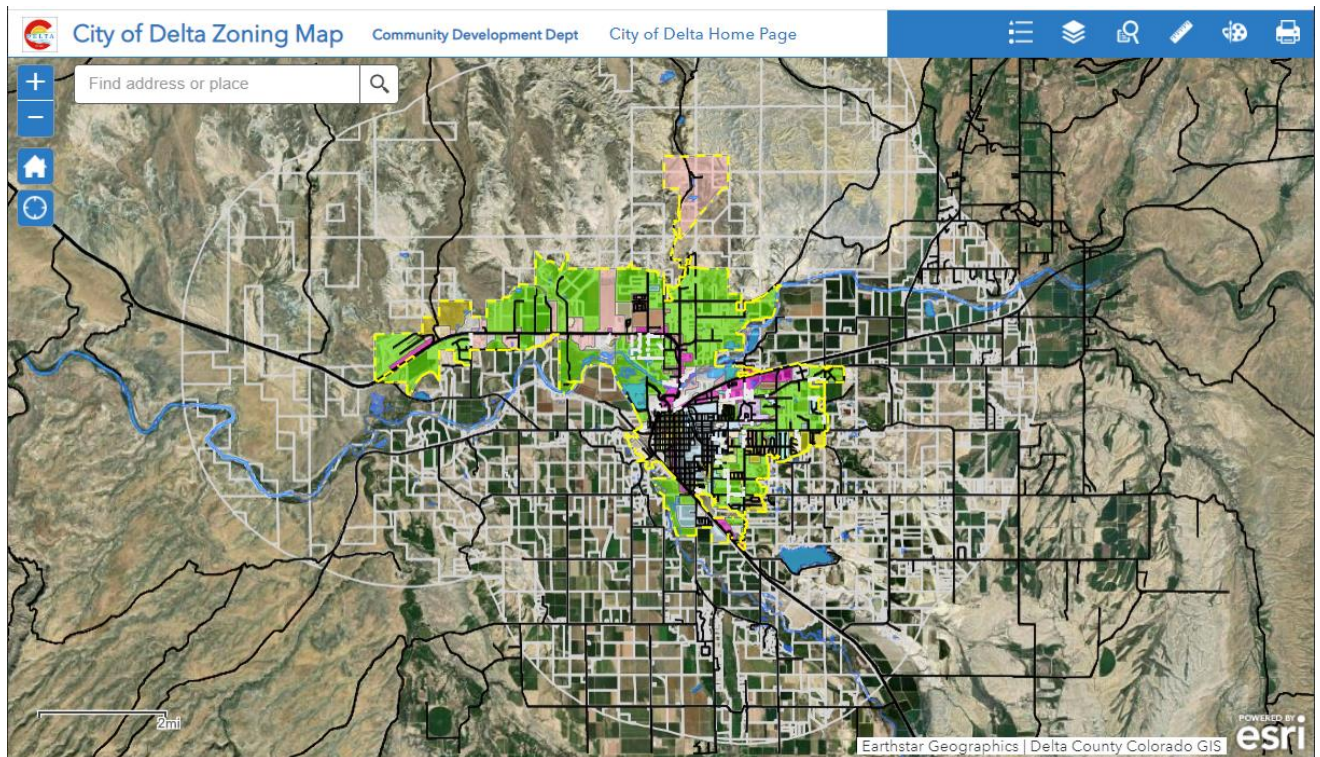
On the left upper corner of the map is the + / - this is for zooming in and out of the map.

The **Home** button below the + / - will return you to the initial extent as shown below.

The **Locator (My location)** button below the Home will zoom to the current location of the user. This applies primarily to cell phone and pad/tablet users as those device are sometimes GPS enabled.

Find address or place (search bar at the top left), type in an address and the map should zoom to that location. It helpful to type in the full address, example, 320 Main St.

In the top middle of the map is a link for **The City of Delta Home Page**. This will open a new page to the City of Delta website.



On the right upper corner of the map in the blue tool bar is the map legend, list of data layers, parcel finder, measure tool, draw, and print.

The **Map Legend** will show the colors for each layer and/or attributes. NOTE: For those items with white or light gray lines, the user may not see the colored symbol in the legend due to the white background.

Layer list – this will open and allow the user to turn on/off the different layers on the map and also expand or contract the layer to see the legend information.

The **Parcel finder tool** can be used to locate a parcel by searching for a parcel number (Tax ID) examples, 345713200010 or the account number R014066. This will zoom to the parcel in question. The results will also provide a link to the Delta County Assessor's page. Parcel numbers and account numbers can be obtained from the County Assessor.

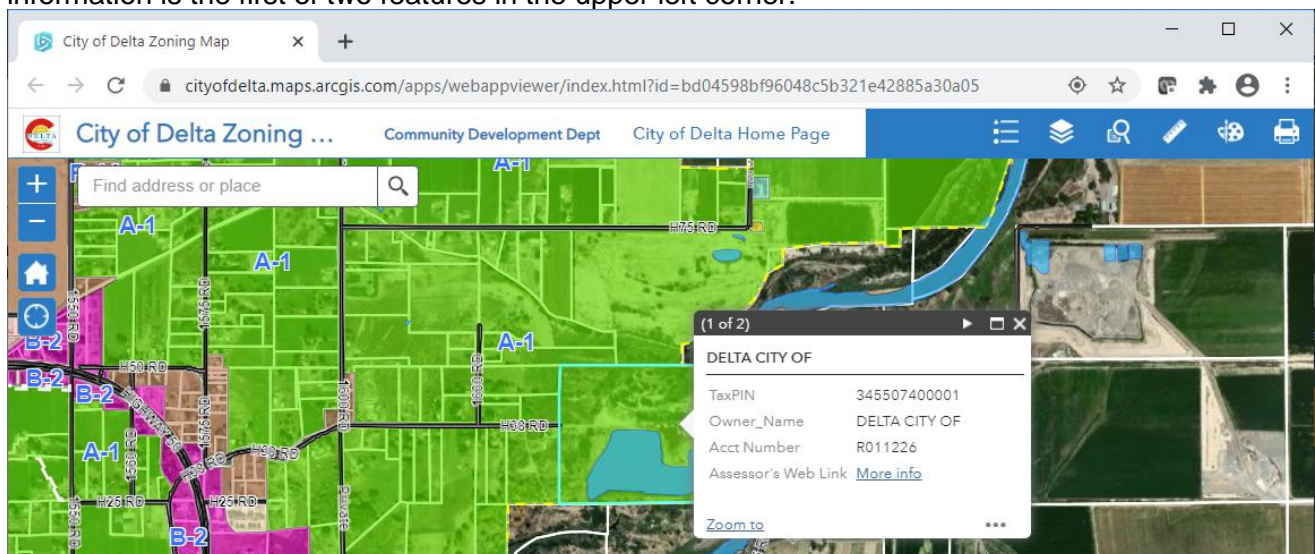
Draw – allows the user to draw/mark up the map with a variety of graphic display. **Undo** will remove the last feature. **Redo** will return the Undo feature and **Clear** will remove all features. You can print a map that will include your markups. The markups cannot be save and are not permanent to the map. They will disappear when you close the map.

Print – allows the user to generate several different types of files that can be saved and downloaded. The default layout is map only as a pdf that can be directly downloaded or printed (easy and most efficient). There other layout options available.

Pop-ups or Identification – The cursor or pointer is used to identify information about the feature(s) of interest. Move the cursor to the location of interest, then mouse click and a popup appears. In the upper left corner it will state how many features (layers) have been selected. In the upper right corner, by clicking on the right pointing arrow, it will change the display to the next layer. Click the **x** to close.

Pop-up Examples:

For parcel identification the information will contain the parcel number/tax pin, owner name, account number and a link to the Delta County Assessor's site for parcel information. In this case, parcel information is the first of two features in the upper left corner.



By clicking on the arrow in the upper right corner, it returns information about the zoning for this parcel. In the upper left corner it will show the information as the second of 2 features.

