

# CORRIDOR MAP

## Delta US 50 and SH 92 Access Plan

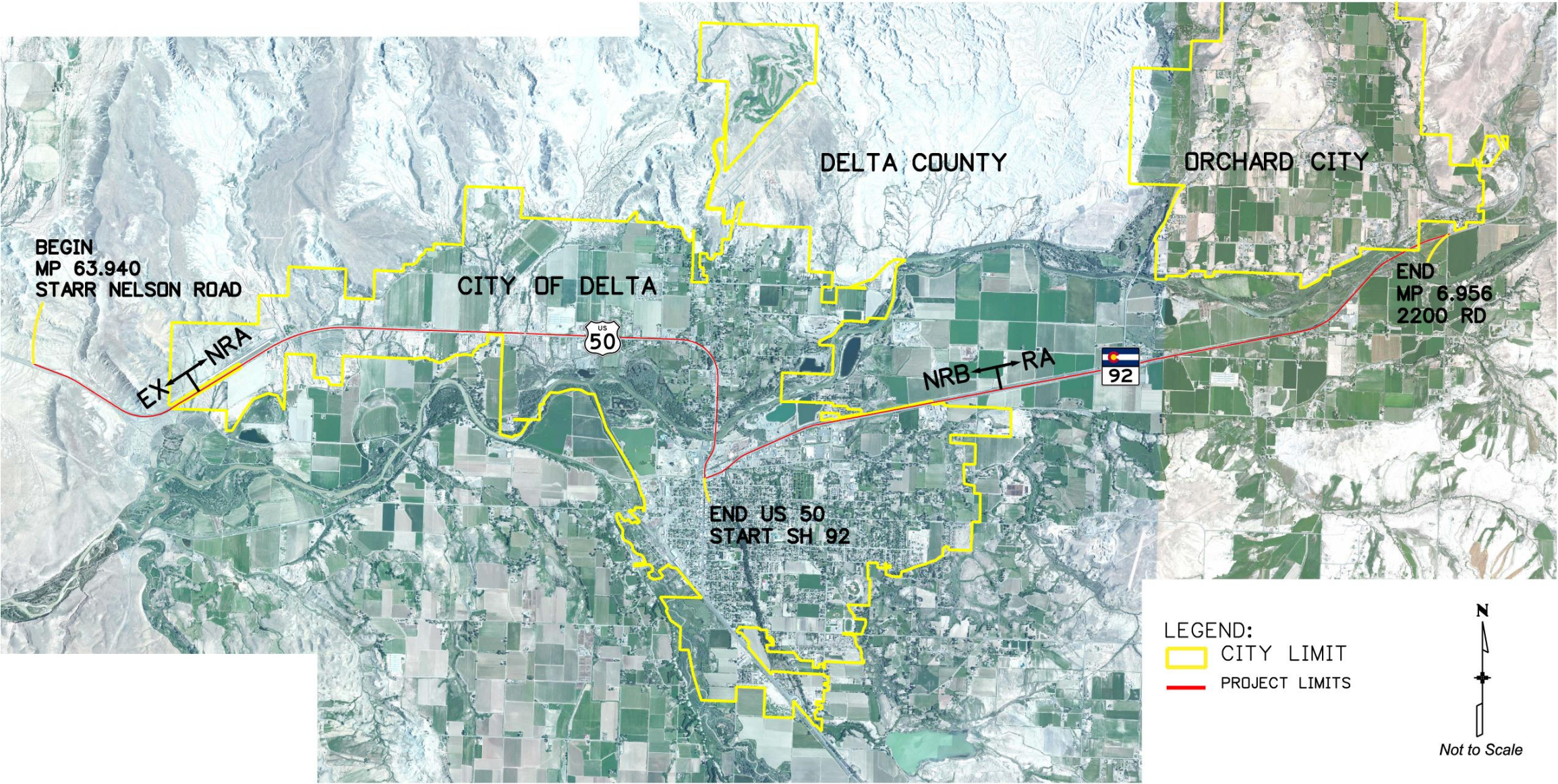
**US 50 Existing Conditions:**  
ADT: 10,000 – 19,100  
139 Total access points  
122 Full movement access points

**US 50 Future Conditions with Plan:**  
95 Total access points  
28 Full movement access points

**SH 92 Existing Conditions:**  
ADT: 4,940 – 15,875  
111 Total access points  
96 Full movement access points

**SH 92 Future Conditions with Plan:**  
55 Total access points  
34 Full movement access points

**Project Limits:**  
US 50- Starr Nelson Road to State Highway 92- 7.0 Miles  
SH 92- US 50 to Austin Road- 6.9 Miles



**LEGEND**

— = Project Limits

— = City Limits

NRB = Access Category, Non-Rural Arterial

RA = Access Category, Regional Highway

(x,xxx/x,xxx) = (Existing ADT/Projected ADT)